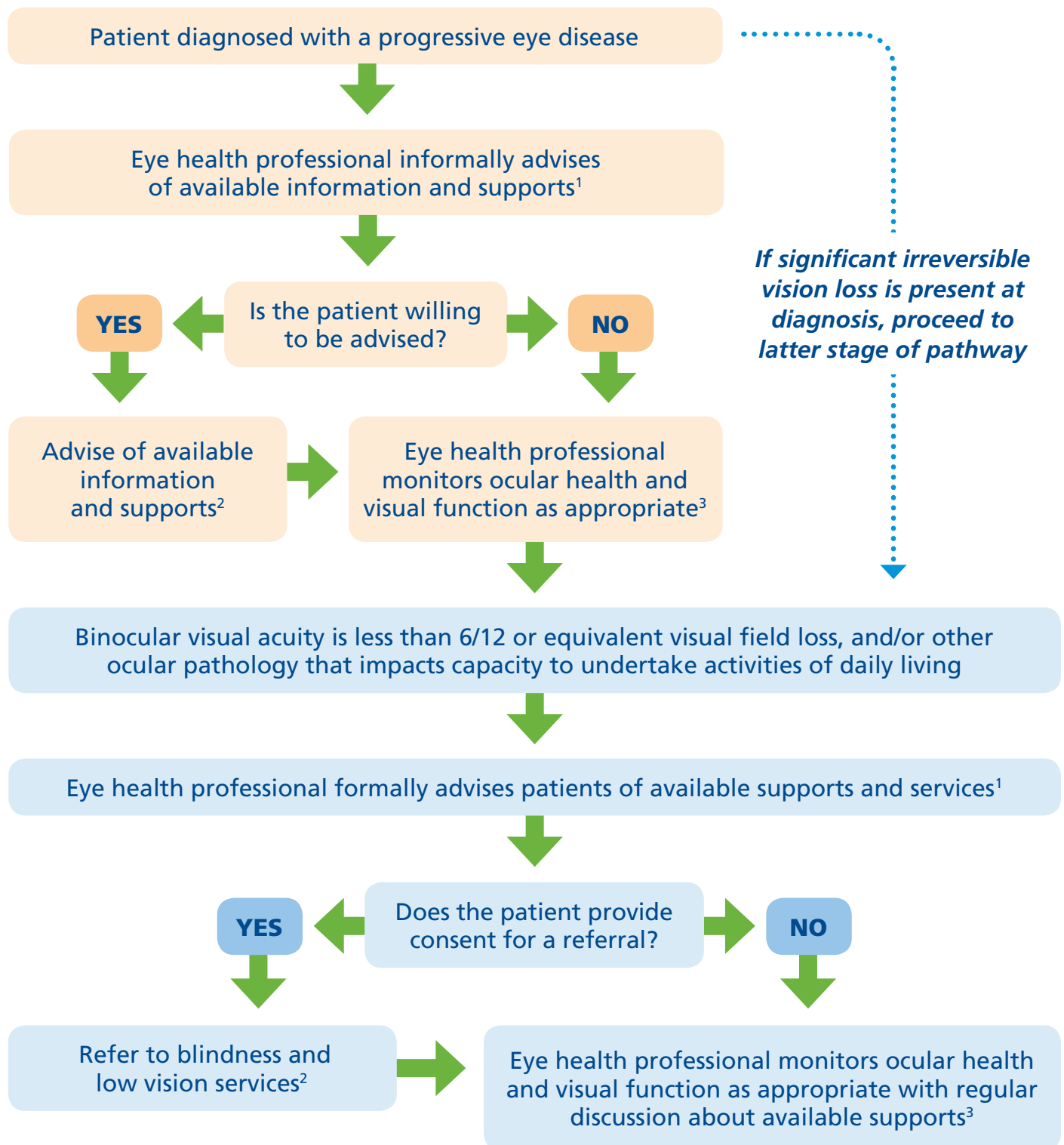


# Adult Referral Pathway for Blindness and Low Vision Services



<sup>1</sup> Mental health support available through blindness and low vision services, additional mental health supports available through General Practitioners and Mental Health professionals if required.

<sup>2</sup> After conversations with an eye health professional a patient may self-refer to blindness and low vision services, this should not discourage further conversations about available supports and services.

<sup>3</sup> In alignment with established clinical pathways and guidelines.



For more information visit:

[www.vision2020australia.org.au/resources/adult-referral-pathway](http://www.vision2020australia.org.au/resources/adult-referral-pathway)

**Vision  
20/20  
Australia**